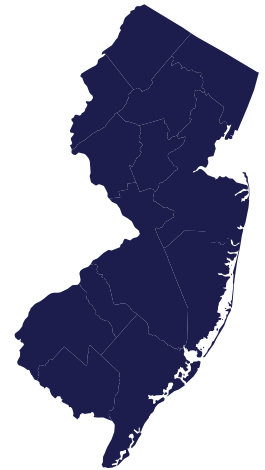
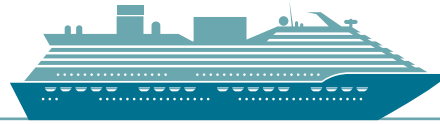


ESTIMATED ECONOMIC IMPACT OF CRUISE SUSPENSIONS

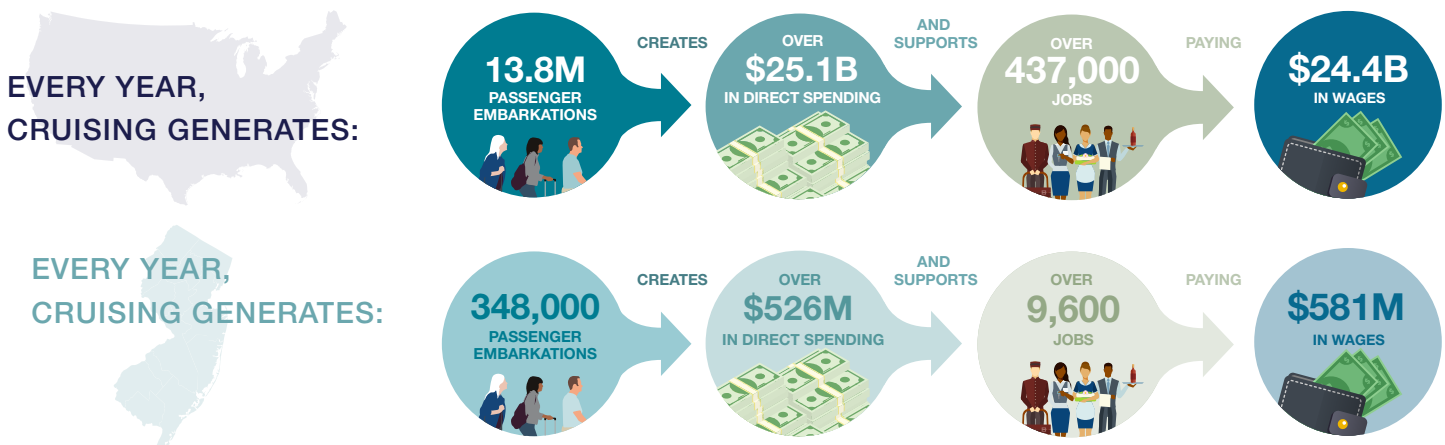


NEW JERSEY



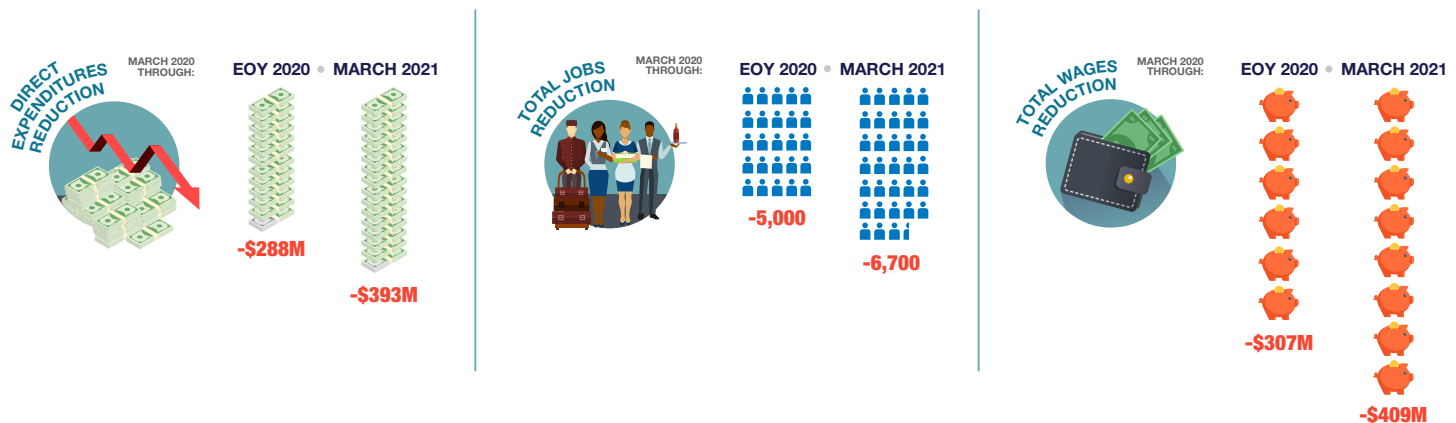
We know that suspending operations was the right thing to do, at the same time, we recognize the devastating impact that COVID-19 has had on our community. That is why the cruise industry brought every force to bear to establish comprehensive prevention, detection and response strategies from the time of booking to disembarkation.

A resumption of cruising in the United States in 2021, with stringent measures in place and with the support of health authorities, will be critical to putting people back to work and fueling the greater economic recovery from the pandemic.



Source: BRE / CLIA 2019 Economic Impact Study

THE SUSPENSION OF CRUISE OPERATIONS RESULTS IN THE FOLLOWING ECONOMIC LOSSES:



13% of total spend is supporting small businesses in NJ*

*2019 CLIA U.S. EIS